

Customer Service

Parts & Accessories Orders

For ordering sliver can parts and accessories please contact Ms. Sheryl Click directly.

Direct: 704 833-1353

Fax: 704 865-7926

E-mail: sclick@conitex.com

Sliver Can Repair Service

Pick-up and Delivery

Please inquire about our sliver can refurbishing and repair service. With our transportation fleet we will pick-up your damaged / worn out sliver cans - refurbish them at our facility - then return to your plant



SLIVER CAN PARTS & ACCESSORIES

1302 Industrial Pike
Gastonia, NC 28052

Phone: 704 864.5406

Fax: 704 865 7926

www.conitex.com



HIGH PERFORMANCE SLIVER CANS

Parts & Accessories for all Sliver Can Types

- *Casters*
- *Springs*
- *Lids*
- *Bumper Bands and Identification Bands*
- *Glide Ring Boots*



High Performance Sliver Cans

Conitex Sonoco

Conitex Sonoco is the worlds largest manufacturer of paper carriers for the spun yarn industry. Conitex Sonoco purchased in December 2004 the assets of The D. E. Williams, Co. a leading manufacturer of sliver cans for carding, drawing, combing, roving and spinning. The sliver can manufacturing operation has been moved to our facility in Gastonia NC where sliver cans are now being produced. It is our goal to become the premiere sliver can producer for the Americas.



Sliver Can Parts & Accessories

No matter which manufacturer of sliver cans you have - DEW, CSI or Tateishi, Conitex Sonoco can furnish our high quality parts and accessories as replacements.

Closa Casters - Choke Resistant

Closa Caster do not clog up with fiber, lint or yarn. Closa Casters are "CHOKES RESISTANT" and have proven themselves to be non-choking on any number of applications, including yarn spinning, cut and sew, and knitting. Additional benefits include the following:

- Reduced labor and maintenance costs - no cleaning chokes from wheels
- Reduced damage to expensive sliver cans during Auto Doff
- No lubrications needed
- Easy rolling - operators love them - reduces operator injuries



In just a few short years Closa Casters have become "The Industry Standard in Yarn Manufacturing".

Elastic Identification Bands

Elastic ID Bands are used by spinners to help keep different fibers and slivers separated. Available sizes either in a 1 or 2 inch width for the following sliver can sizes: 16", 18", 20", 24", 28", 30", 36" 40" and 48". Solid colors only - see colors available below..



Woven Spandex Identification Bands

Woven Spandex ID Bands represent the newest innovation in sliver can identification. These bands offer custom identification because they can be in various patterns (stripes, checkerboard etc) or custom woven numbers or words. The greatest benefit is that they will last for years without loosing elasticity.

Popular colors for Bumper Bands and Elastic & Spandex Bands



The above colors are for general purpose only - actual shades will vary

Glide Ring Boots

Available on can sizes: 16", 450mm, 18", 20" & 24".

Allows a can without casters to slide much easier on floor.

Easy on spinning operators. Prevents wear on bottom of sliver can.

Reduces wear on floors.

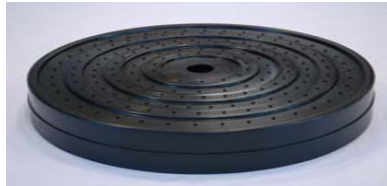


Miscellaneous Parts & Accessories

Bail Straps and Hardware, card can handles and card can latches.

Piston Lids

Most piston lids come in black plastic. Metal piston lids are available in 36", 1,000mm & 40". Listed below are common sizes available.



Piston Lid	Skirt Length
16"	2"
16"	4.5"
450mm	4.25"
18"	4.5"
18"	2"
18.5"	3.25"
20"	2"
20"	3.25"

Piston Lid	Skirt Length
24"	2.5"
24"	4.5"
600mm	2.5"
30"	4"
36"	4"
1,000mm	4"
40"	4"
1,200mm	4"

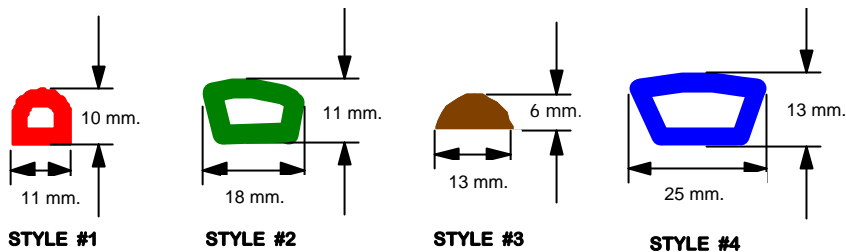
Colored Bands for Fiber & Sliver Identification

Vinyl Bumper Bands

Protects outer sides of sliver can when parked side by side and is often used as fiber identification. Available sizes include: 16", 18", 20", 24", 28", 30", 36", 40" and 48". See colors available on next page .



BUMPER BAND STYLES



Closa SAT - 50 Choke Resistant Casters

Recommended for sliver cans through 24 inch diameter with short staple fibers or buggies and bundle carts. Load per caster is 40-50 lbs, available in swivel only with rectangular top or threaded stem. Bolt holes for rectangular top are 7mm diameter and bolt hole spacing is 22mm x 56mm. The 3/8 inch threaded stem length is 22mm or 40mm.



Closa SAT - 60 Choke Resistant Caster

Recommended for sliver cans through 30 inch diameter with short and long staple fibers and bundle carts. Load per caster is 50-60 lbs, available in swivel only with rectangular top or threaded stem. Bolt holes for rectangular top are 7mm diameter and bolt hole spacing is 22mm x 56mm. The 3/8 inch threaded stem length is 40mm.



Closa I - 65 Choke Resistant Caster

Recommended for sliver cans through 36 inch diameter with short and long staple fibers and popular on many carding and drawing processes. Load per caster is 60-70 lbs, available in swivel or rigid styles. Bolt holes for rectangular top are 7mm diameter and bolt hole spacing is 45mm x 80mm.



Closa I - 80 Choke Resistant Caster

Recommended for sliver cans through 40 inch diameter with short and long staple fibers. Load per caster is 90-110 lbs, available in swivel or rigid styles. Bolt holes for rectangular top are 10mm diameter and bolt hole spacing is 50mm x 85mm.





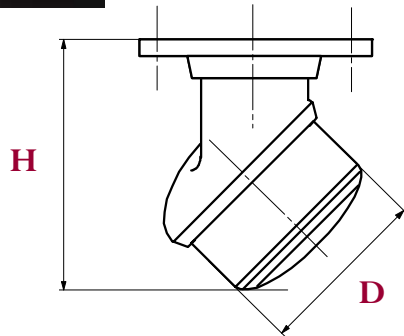
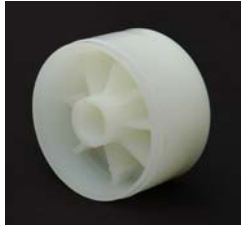
Closa I – 120 Choke Resistant Caster

Recommended for sliver cans through 40 inch diameter with short and long staple fibers and often used on yarn trucks. Load per caster is approximately 300 lbs when pulled or towed by a tow motor vehicle or 175 lbs when truck is to pushed by human movement. Available in swivel or rigid styles. Bolt holes for rectangular top are 11mm diameter and bolt hole spacing is 70mm x 121mm.

Closa Choke Resistant Casters - Replacement Wheels

Conitex Sonoco can furnish replacement wheels for all Closa casters.

- SAT - 50 I - 65 I - 120
- SAT - 60 I - 80



Closa Casters	Diameter of Caster (D)		Height of Caster (H)		Load (lbs)
SAT - 50	50 mm	2"	80 mm	3 1/8"	40 - 50
SAT - 60	60 mm	2 3/8 "	85 mm	3 5/16"	50 - 60
I - 65	65 mm	2 1/2"	100 mm	4"	60 - 70
I - 80	80 mm	3 3/16"	114 mm	4 1/2"	90 - 110
I - 120	120 mm	4 3/4"	157 mm	6 3/16"	300

Placement of Closa Casters on Sliver Cans

Closa swivel casters come in right (D) and left (I) types. Proper rollability requires two right hand casters and one left hand caster or it requires one right hand caster and two left hand casters (examples are DDI or IID).



McArthur Casters

McArthur Casters – 100mm & 125mm with thread guards are used successfully on sliver cans 40 inches and over. Recommended weight is approximately 400 lbs and is available in swivel and rigid types. Bolt holes for rectangular top is 8mm diameter and bolt hole spacing is 60mm x 80mm.



Sliver Can Springs

The load (or pressure) to be applied on the sliver can spring varies depending upon the material (stock) to be spun. Conitex Sonoco supplies sliver can springs for all types of short or long staple fiber. The three main types are single coil springs, tie-down springs and pantograph springs for stability of large sliver cans and heavy weight loads.



Spiral Spring



Tie-Down Spring



Pantograph Spring

Spring Information Needed When Ordering

- Process** (carding, drawing etc) **Lid type** (plastic or metal) & weight
- Lid position** relative to top of can **Pre-tension** of spring if required
- Can size** inside height and diameter
- Type of fiber** (cotton, polyester etc)
- Weight of fiber** (stock) when can is full